

Interlock Roofing® Standing Seam Specification Manual



Lightweight Aluminum Roofing
Interlock Roofing Ltd.



INTERLOCK
Lifetime Roofing Systems

Interlock Standing Seam aluminum roofing is a fully interlocking system. Its unique design profile makes a weather-tight unit, and unlike other metal panel roofs, no rivets or screws are exposed on the surface of the panels.

It may be installed on new construction, or applied over existing roofs. All trims and caps are designed to ensure an integrated weather-proof roof.

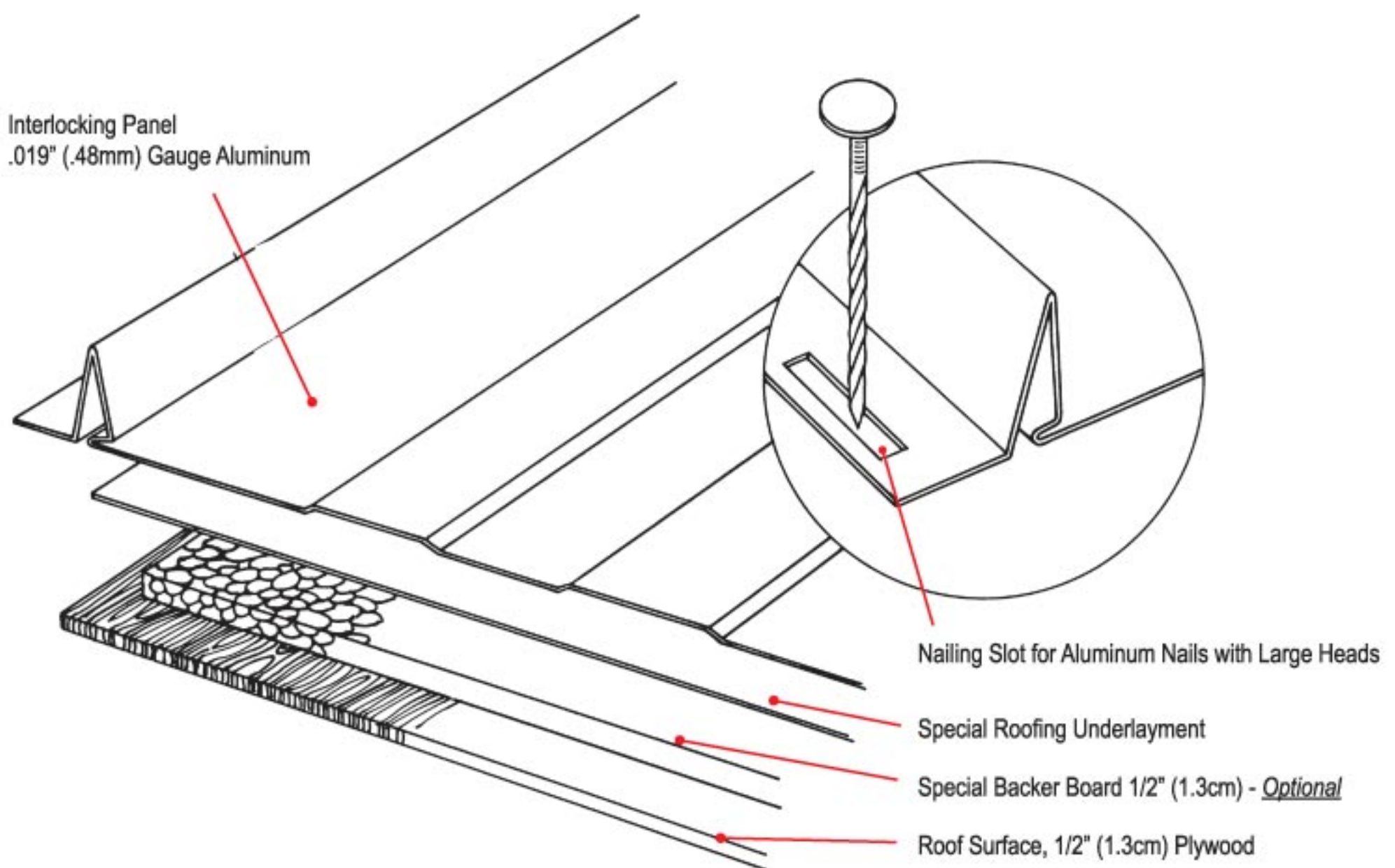
Interlock Standing Seam has many advantages when compared to other roofing products.

Maintenance: The inorganic nature of aluminum discourages growth of moss and does not provide an anchor for debris.

Longevity: Interlock has a lifetime warranty.

Energy Efficient: Energy Star® Rated.

Note: It is the responsibility of architects, builders and roof installers to ensure that all construction bylaws and building codes are adhered to.



Interlock Standing Seam is composed of panels, 15.5" wide, which can be manufactured to any pre determined length. The panels are coated with Alunar®, embedded with Dupont™ Teflon® to provide an extremely durable and attractive surface.

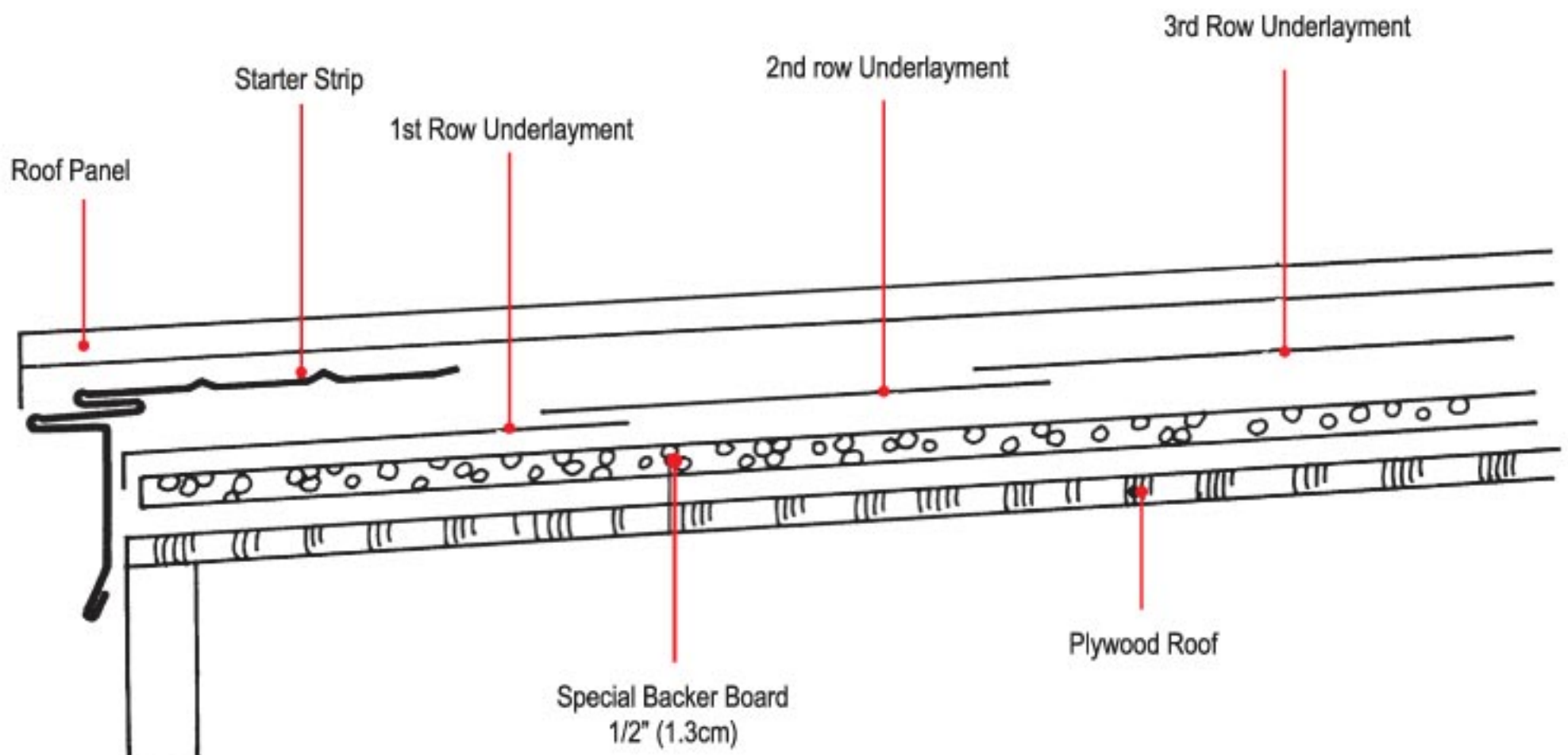
The panels are roll formed with a ribbed contour to give added strength. A uniquely designed ridge on each panel provides a secure system of interlocking the panels together.

Weight: Interlock Standing Seam weights considerably less than most other types of roofing systems. No special preparation is needed, resulting in less structural cost.

Application: Aluminum nails of varying lengths with a shank diameter of 0.155" and a head diameter of 1/2" are used to attach panels and accessories.

Sheathing: For new construction, on 24" centers, sheathing should not be less than 1/2". On 16" centers, sheathing should not be less than 3/8".

Underlayment: Optional 1/2" Special Backer Boards are laid on the existing roof to provide a proper base. They are then covered with a special roofing underlayment. Interlock's panels are then installed and nailed through to sheathing.

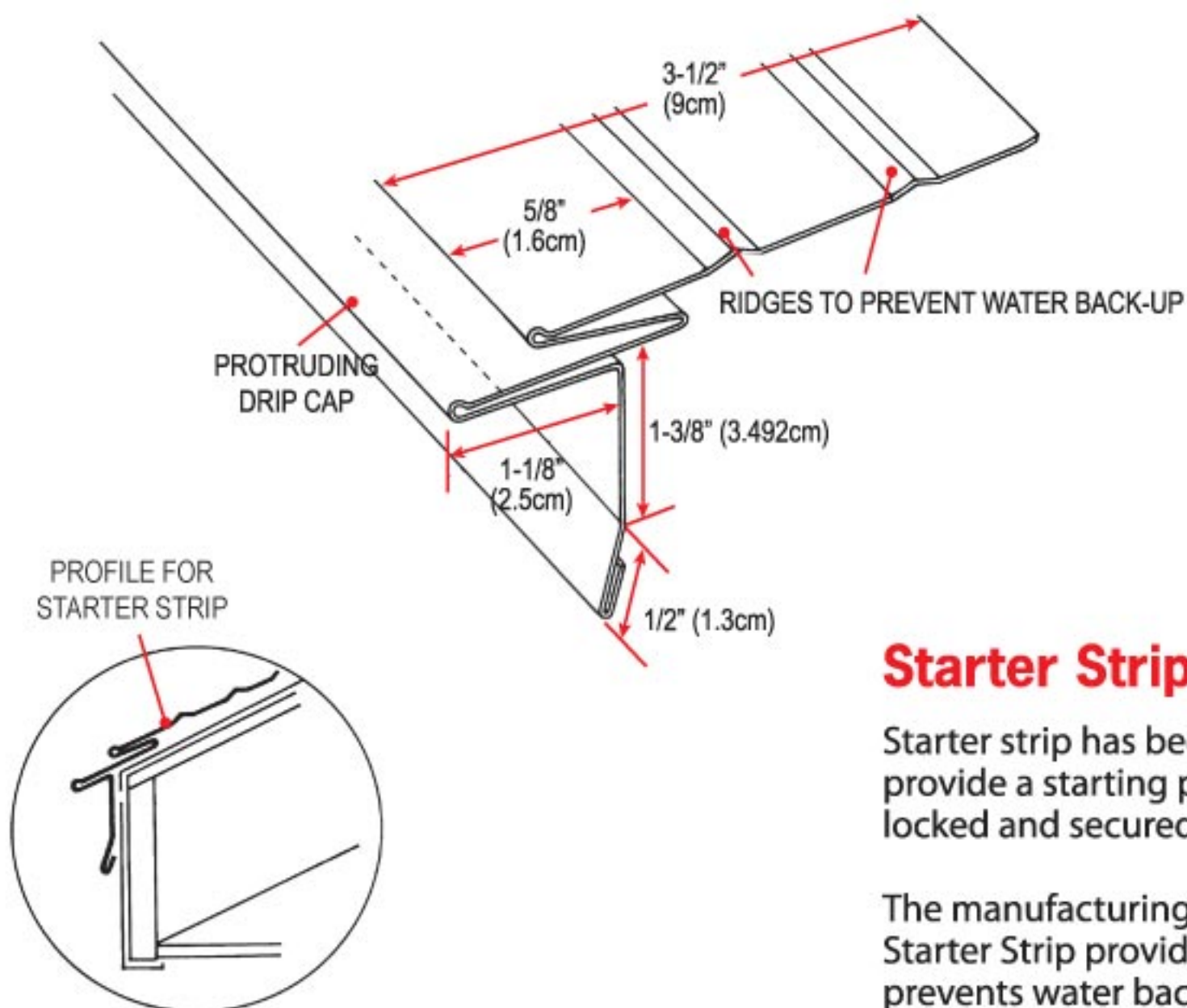
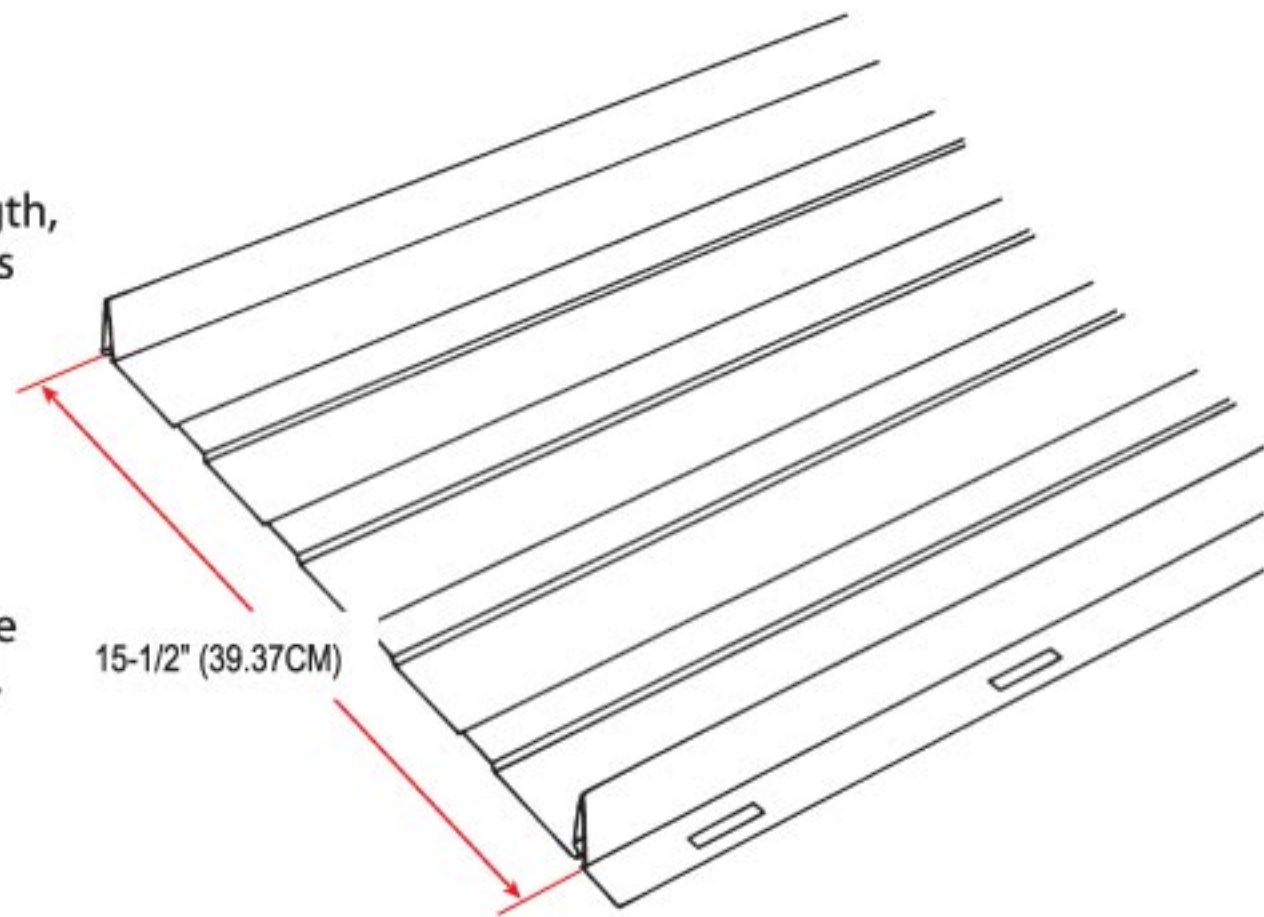


Interlock Panel

Manufactured to any desired specific length, in continuous form. Runs are vertical. Panels lock into each other on one edge and are nailed to the roof on the other edge.

Panels are slotted to allow for maximum expansion and contraction.

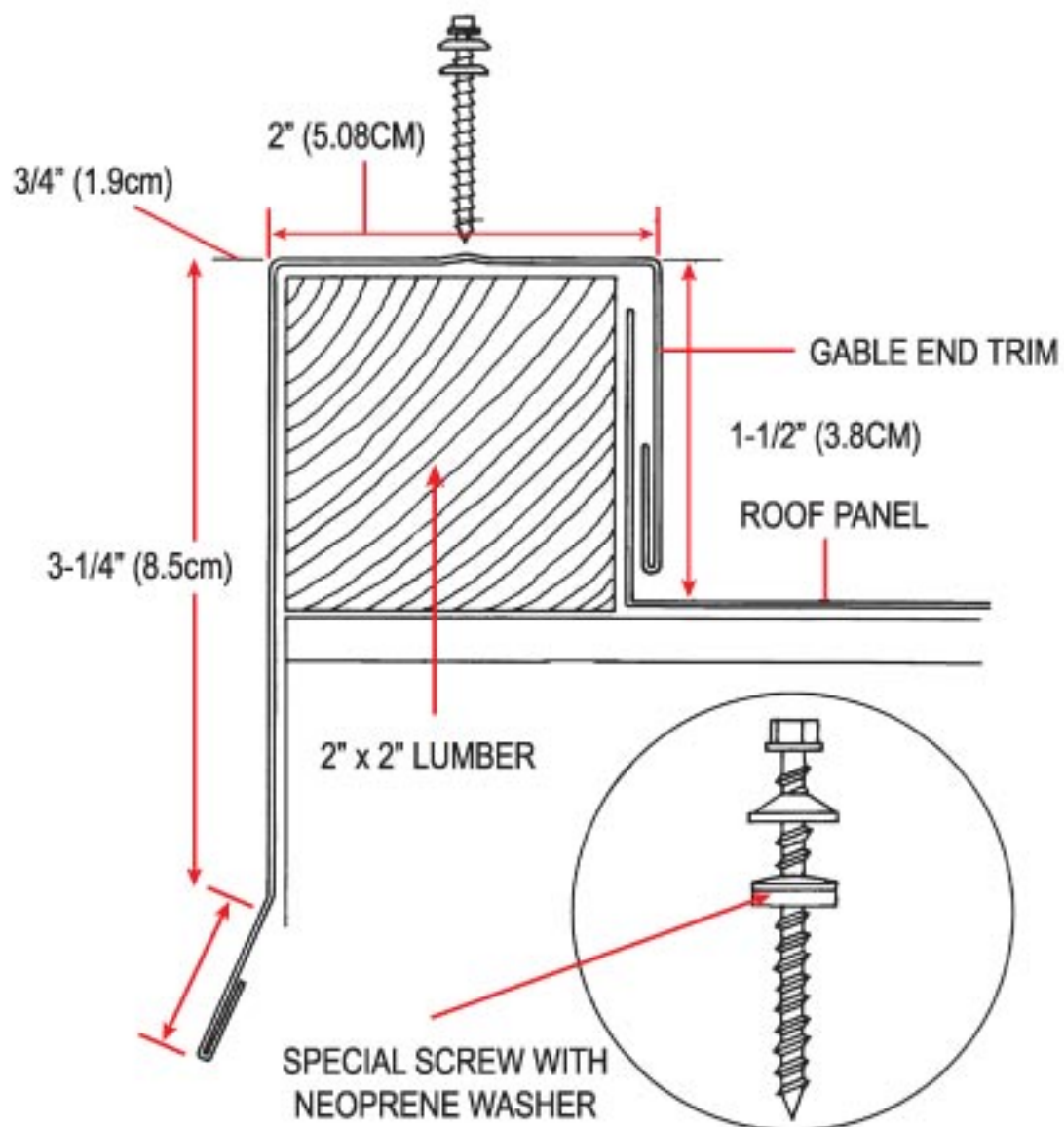
Structural rigidity and visual appeal are enhanced by four raised ribs on each panel.



Starter Strip

Starter strip has been technically designed to provide a starting point where panels are locked and secured.

The manufacturing characteristics of the Starter Strip provides a water barrier with prevents water back-up.



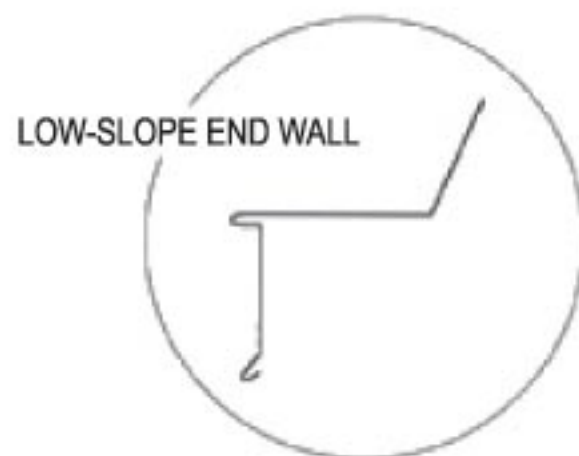
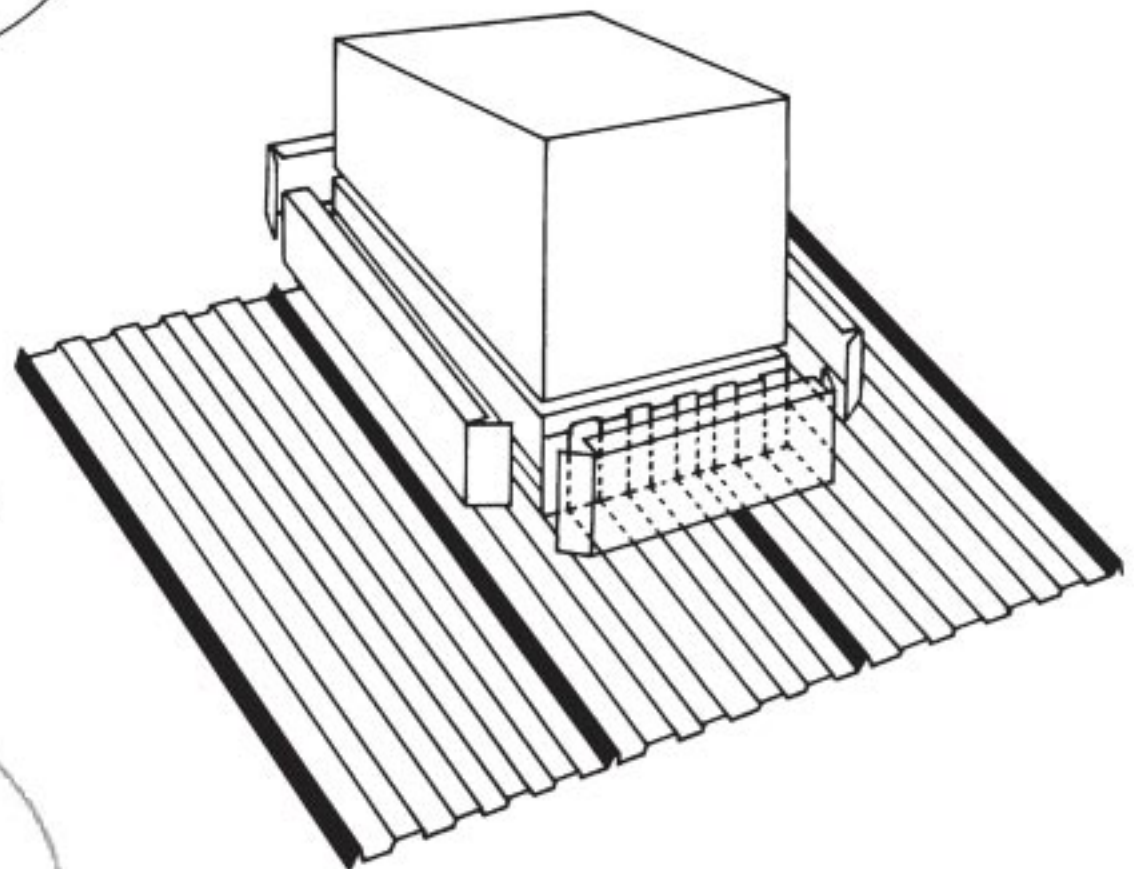
Gable End Trim

A strip of lumber, measuring 2" x 2" is laid on the edge of gable end and nailed down. Roof panels are bent up the inside edge.

Gable end trim is then applied over top to form a protective cap, and secured by special screws with neoprene washers.

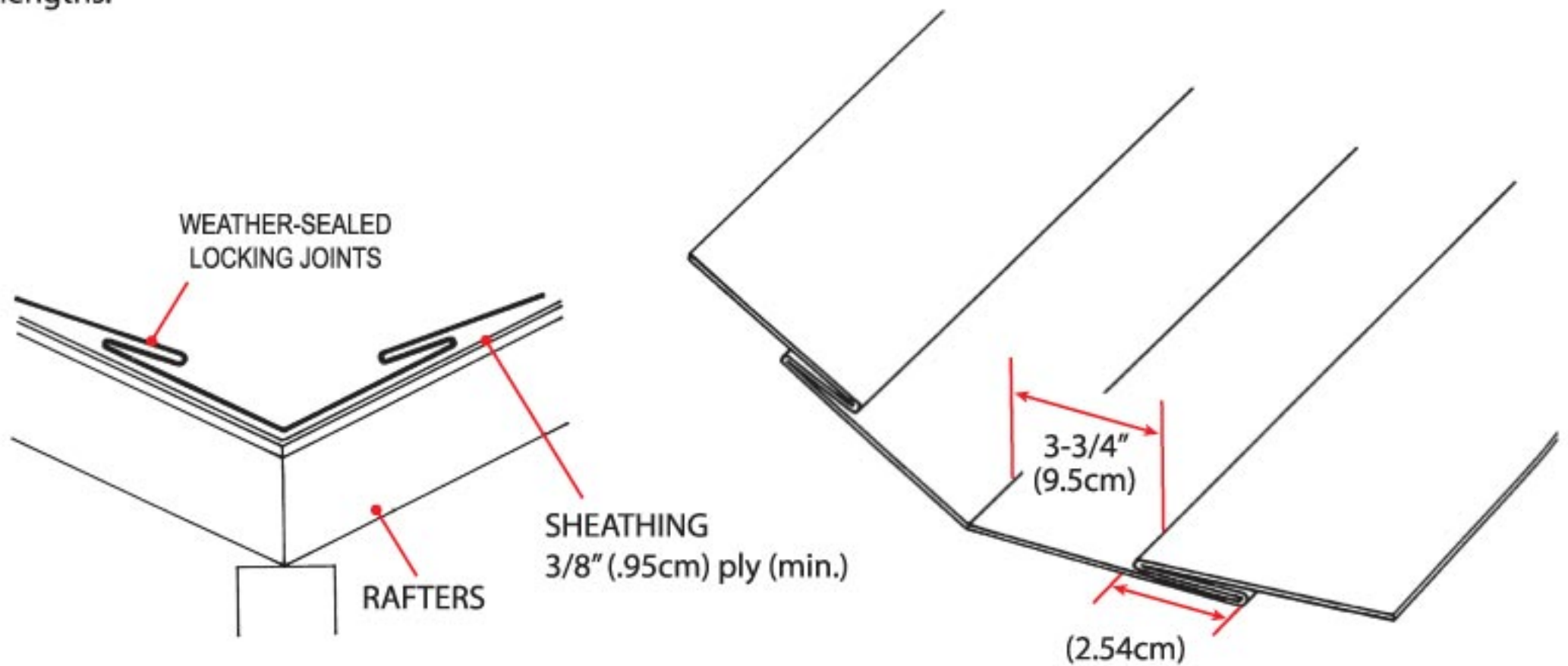
Chimney Collar

Provides a weather-tight seal around chimneys. Roof panels are secured around the chimney and a collar is cut into the brick and mortar, covering the roof panels.



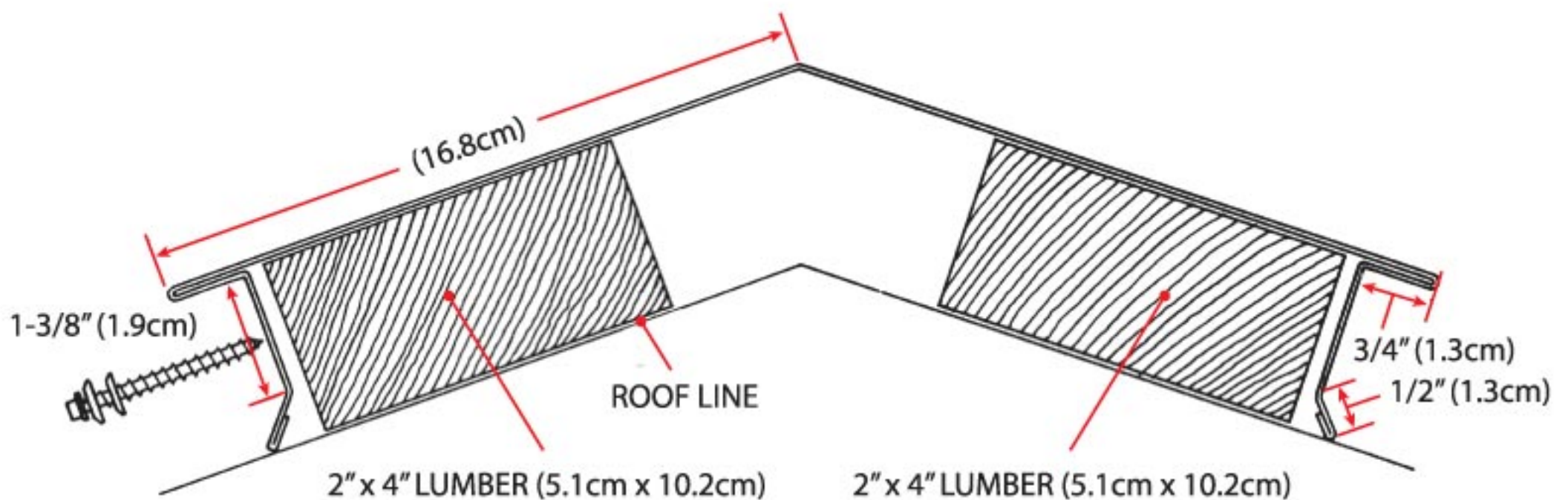
Valley Trim

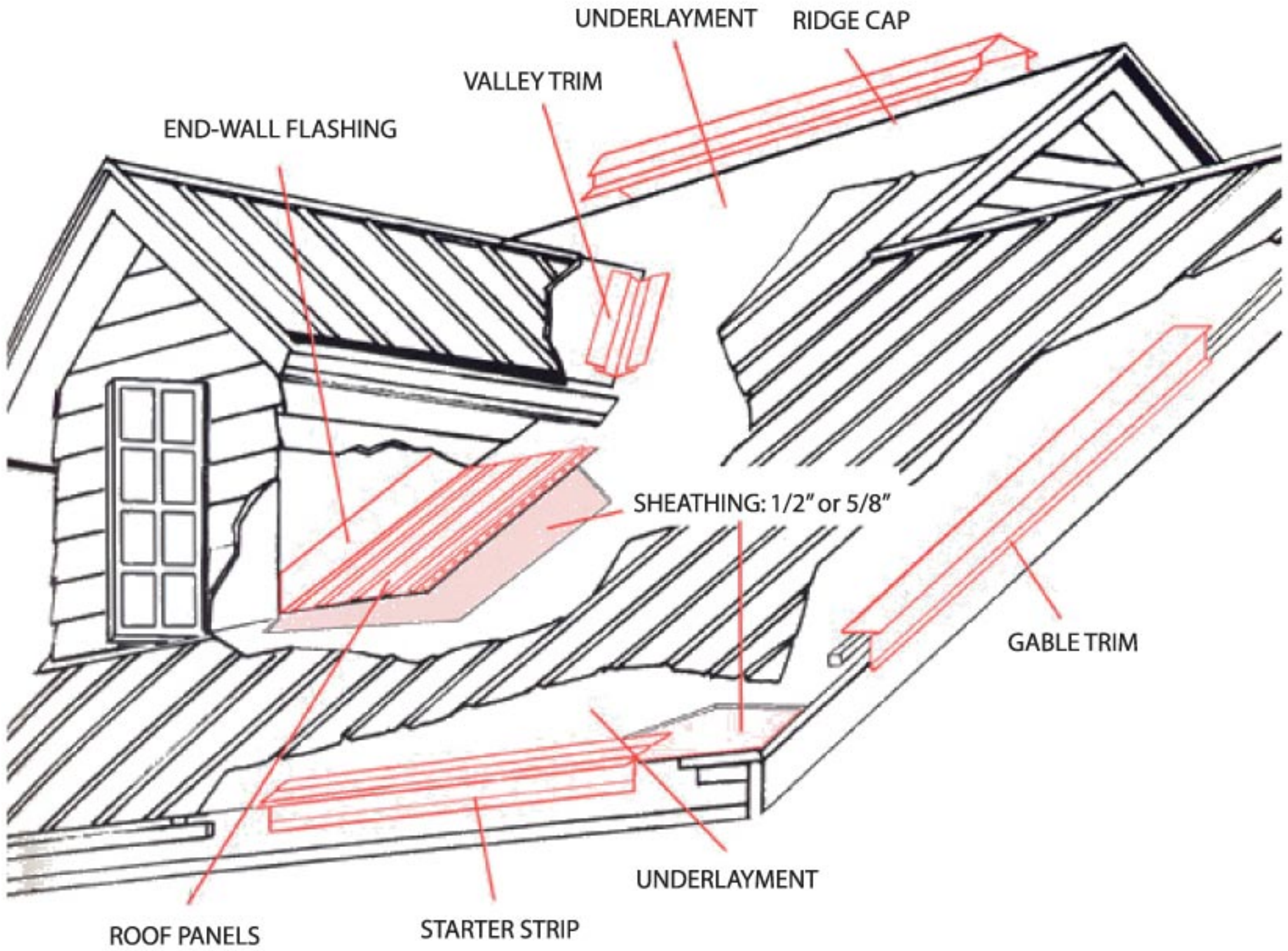
Provides smooth, obstruction-free path for precipitation. Roof panels are trimmed and folded inside the locking joint to form a solid weather-proof unit. This specially designed trim is manufactured in 10' lengths.



Ridge Cap

After roof panels have been installed, 2" x 4" lumber is secured along each side of the ridge to form a support for the ridge cap. Special 1-1/2" self-tapping wood screws with neoprene washers are used to secure the ridge cap to the roof. This ensures that no nails or screws are exposed to rain or to the weather.





The Best roof for **Planet Earth.**
 The Last roof you will **ever need.**



Color Guide

Interlock® Roofing Ltd. offers a highly durable aluminum roofing product available in a range of different colors, opening up an extensive palette for homeowners and designers. Interlock® roofs are exclusively protected for a lifetime by Alunar® embedded with Dupont™ Teflon® for ultimate durability and protection.



Aged Copper



Weathered Grey



Solid Copper



Charcoal Grey



Dark Green



Tile Red



Tudor Brown



Black



Royal Blue



Actual product color may differ to that represented on manual.
Product design and installation technique may vary from manual.